

State of Wyoming Corner Record

(In compliance with the *CORNER PERPETUATION AND FILING ACT*, Wyoming Statutes, 1977, Section 36-11-101, et, seq., and the Rules and Regulations of the Board of Registration for Professional Engineers and Professional Land Surveyors)

Reverse side of this form may be used if more space is needed.

Record of original survey and citation of source of historical information (if corner is lost or obliterated). Description of corner monumentation evidence found and/or monument and accessories established to perpetuate the location of this corner. Sketch of relative location of monument, accessories, and reference points with course and distance to adjacent corner(s) (if determined in this survey). Method and rationale for reestablishment of lost or obliterated corner.

Original GLO Notes by J. W. Hammond in June and July A.D. 1872, to wit:

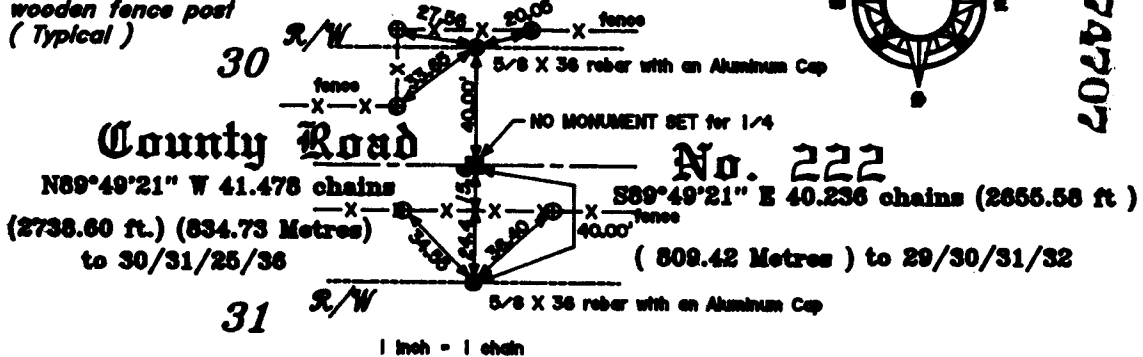
"West on a random line between Sections 30 and 31.

40 Chains set temporary 1/4 Sec. Cor 81.25 chains intersect the West Boundary of the Township 3 links North of the corner to Sections 30 and 31, from which corner I run N89°59'E on a true line between Sections 30 and 31, 41.25 chains set sandstone 18" x 11" x 4" for 1/4 section corner..."

Searched for stone or remnants but could not find any evidence. The roadway was excavated to a depth of 3 ft. +/- a width of approximately 40 ft and 200 ft in each direction, but no evidence was found. Measured from section corner and single proportioned in the location for this 1/4 corner. Set rebar with al. cap 40ft. N. and 40 ft. S. for witness corner marked R/W and tied as shown hereon. Basis of bearing = solar observation on 6 December A.D. 1995.

T. 16 N. of R. 61 W. of the 6th P.M.
Laramie County, Wyoming

Note ~
 Ties are to Roofing Nails
 with ribbon in
 wooden fence post
 (Typical)



NO MONUMENT WAS SET FOR THIS 1/4 CORNER BECAUSE THE CONSTRUCTION PROPOSED WOULD OBLITERATE SAID MONUMENT. W.C. WERE SET AT 40 FEET NORTH AND 40 FEET SOUTH MARKED R/W

LARAMIE COUNTY CLERK
 CHEYENNE, WY.
 95 DEC 29 PM 12 28
 174707

Date of Field Work: 26 December 1995 Office Reference: _____

CROSS INDEX DIAGRAM

Firm/Agency, Address

1	2	3	4	5	6	7	8	9	10	11	12	13	14	15	16	17	18	19	20	21	22	23	24	25	
A																									A
B																									B
C	6				5					4					3					2				1	C
D																									D
E																									E
F																									F
G																									G
H																									H
J																									J
K																									K
L																									L
M																									M
N																									N
O																									O
P																									P
Q																									Q
R																									R
S																									S
T																									T
U																									U
V																									V
W																									W
X																									X
Y																									Y
Z																									Z
1	2	3	4	5	6	7	8	9	10	11	12	13	14	15	16	17	18	19	20	21	22	23	24	25	

Terrestrial Surveying & Mapping
 P. O. Box 82
 Cheyenne, WY 82003
 Telephone Number: 307 634-9360

This corner record was prepared by me or under my direction and supervision.
SEAL & SIGNATURE



Corner Name: 1/4 Section: 30&31 T_16 R 61: 6th P.M. Cross-Index No.: V-3